

If you are having difficulties viewing this e-mail please [click here](#).



The global provider
of secure financial messaging services

SWIFT Training

Latest news about SWIFT Training offering

[Home](#) | [Catalogue](#) | [Contact us](#)

April 2017

Dear customer,

It is with great pleasure that I am sharing with you the latest news regarding our SWIFT Training offering.

Since the launch of our new eLearning platform, [SWIFTSmart](#), we are pleased to see our learning community growing constantly. To date 8,000 individuals from more than 3,000 separate financial institutions are using SWIFTSmart to increase their knowledge and thereby bringing their institution closer to operational excellence. About 100 people are joining each day, don't delay, join our learning community on SWIFTSmart now and discover the value it can bring to you!

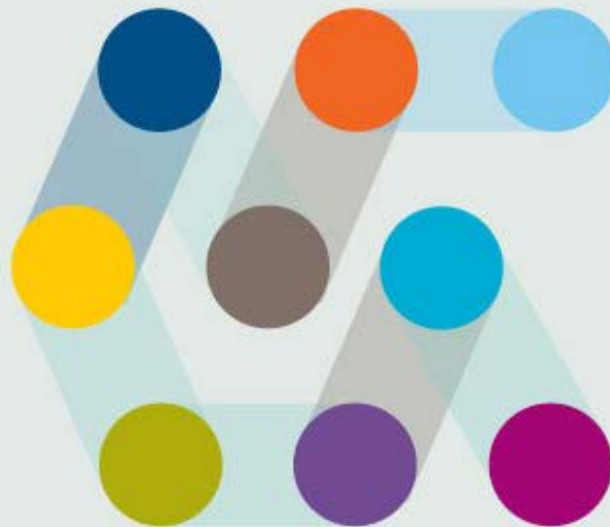
I am also happy to introduce our new [2017 Training catalogue](#), which has received a complete makeover to reflect our changed training offering.

I wish you a great training experience with SWIFT and don't hesitate to [contact us](#) to start defining your desired training path!



Benoit Pirotte

Product Manager Training Services



Explore our new Training catalogue

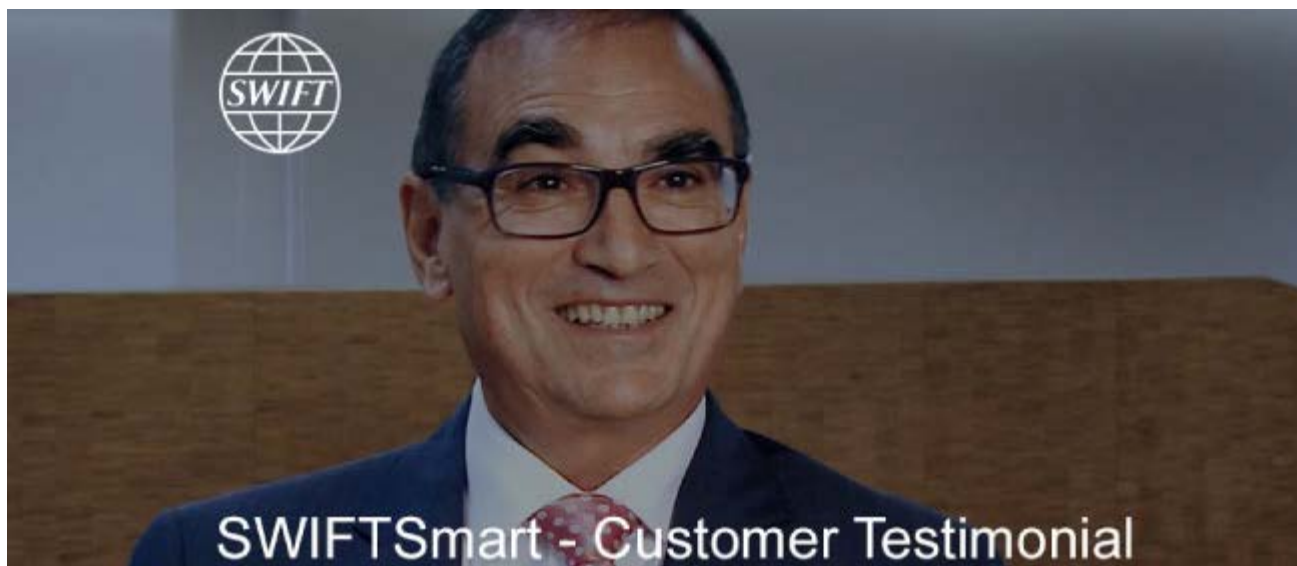
Explore our new Training catalogue providing a complete overview of all SWIFT training: SWIFTSmart eLearning courses, guided tailored trainings, focused bootcamps as well as blended offerings with certifications. You can be sure to find a solution matching your requirements!

[Download now](#)

SWIFTSmart: the learning transformation on its way!

Thanks to SWIFTSmart, all the basic knowledge necessary to operate SWIFT securely and efficiently is available to all SWIFT users' employees, anytime, anywhere and from any device. SWIFTSmart also helps you get up-to-speed with industry topics such as security or standards, or helps you prepare for new programmes, such as CSP or the 7.2 upgrade. Not on SWIFTSmart yet? See [our video](#) and get started!

[Login now](#)



Discover what our users say about SWIFTSmart

See our short video featuring Paul Chammas, Head of Group Operations at Byblos Bank S.A.L., who explains how his staff benefited from the SWIFTSmart experience.

[Watch now](#)

SWIFT Security Bootcamp: enroll now!

In an era of pertinent cyber threat, security management is high on everyone's agenda. The SWIFT Security Bootcamp aims to shed light on security-related roles and responsibilities and help institutions trigger the right questions internally to ensure security is managed in the best way possible. This Security Bootcamp is a deep-dive programme which includes hands-on sessions, forums led by market experts as well as roundtables to promote cross-institution collaboration. Several Security Bootcamps are scheduled in 2017 – don't miss the one organised in your region: check out [available dates and locations](#) and register.

SWIFTSmart top 5 courses

- [Release 7.2 - Plan Your Project:](#)
Find out what the 7.2 release entails and what the key milestones are
- [Alliance Software: User Authentication Methods:](#)
Learn why two-factor authentication is an efficient method to secure your environment
- [SWIFTRef BIC Plus:](#)
Get started for the BIC transition to ISO 9362:2014
- [Non-Deliverable Forwards \(NDFs\) and Non-Deliverable Options \(NDOs\) – Standards Release 2017:](#)
Learn how to avoid rejects and to be able to format your MT 300, MT 304, and MT 305 correctly
- [SWIFT's Customer Security Programme – Introductory video](#)

SWIFTSmart: more to come!

More than 200 online courses are currently available, in MULTIPLE languages, covering topics organized in learning tracks such as: basic knowledge around SWIFT, message standards for payments, treasury, trade and securities, SWIFT software and connectivity, Security and Audit, and Compliance and shared services. In the course of 2017, another 80 courses will be added on topics like corporate actions, ISO 20022 adoption, Global Payments Innovation (gpi) service, cyber-security and real-time payments innovation. Existing modules will also be further translated. [Stay tuned!](#)

Tip for SWIFT.com administrators: grant access to SWIFTSmart by means of a standard profile

SWIFTSmart is available to all employees within an institution, via a swift.com account which enables them to access the platform. As a SWIFT.com administrator, you may have recently observed an increase in your SWIFT.com registrations requests due to SWIFTSmart. In order to make the approval process more efficient, we recommend you set up a standard profile for SWIFTSmart on www.swift.com. This way, when a new user selects the SWIFTSmart standard profile, he/she will automatically get the pre-defined rights to be able to access SWIFTSmart. Check the 'how to' process as described in the [User Handbook \(UHB\)](#).

Note that, in the profile admin screen, you do not need to grant any access for SWIFTSmart itself, but you can choose to grant access to UHB and/or KB, so that users also have access to information that is referred to from SWIFTSmart.

About SWIFT

SWIFT is a global member-owned cooperative and the world's leading provider of secure financial messaging services. We provide our community with a platform for messaging, standards for communicating and we offer products and services to facilitate access and integration; identification, analysis and financial crime compliance. Our messaging platform, products and services connect more than 11,000 banking and securities organisations, market infrastructures and corporate customers in more than 200 countries and territories, enabling them to communicate securely and exchange standardised financial messages in a reliable way. As their trusted provider, we facilitate global and local financial flows, support trade and commerce all around the world; we relentlessly pursue operational excellence and continually seek ways to lower costs, reduce risks and eliminate operational inefficiencies. Headquartered in Belgium, SWIFT's international governance and oversight reinforces the neutral, global character of its cooperative structure. SWIFT's global office network ensures an active presence in all the major financial centres.

If you do not wish to receive our e-mails anymore, [click here](#) to manage your subscription to the newsletter.