



## 18<sup>th</sup> CGI Plenary Meeting – the 23<sup>rd</sup> June 2015

## Meeting Notes

---

**Conference Call: 15:30 – 17:00 CET**

### Attendees:

Harri Rantanen	SEB	Co-convenor
David Dobbing	SWIFT	Note Taker
Alexander Reinecke	Deutsche Bank	
Christian Hasse	Danske Bank	
Christos Kiosses	Hanse Orga	
Cornelia Hesse	BASF	
Deborah Canale	Wells Fargo	
Florent Schumm	bfinance	
François Lemaire	UTSIT	WG3 Facilitator
Glen Solimine	JPMorgan Chase	WG4 Facilitator
Jacob Groth	Nordea	
Jacques Molgo	Air Liquide	
Johan Ivars	Handelsbanken	
Joyce Maghan	FIS	
Kerstin Schoenwitz	Deutsche Bank	
Krister Edgren	AB Electrolux	
Mattias Rylander	SEB	
Mike Dausman	Fiserv	
Morten Holter	BSK	
Neil Clarke	Volante	WG2 Facilitator
Peter Hoogervorst	Standard Chartered	WG1 Facilitator
Phil Hong	Citi	
Po Ngan	Barclays	
Sebastian Hahn	Reval	
Selina Bolton	Deutsche Bank	WG5 Facilitator
Sudipta Banerjee	Barclays	
Victor Schneide	Horváth & Partners	

### Agenda Summary

1. Previous meeting notes from 2015-03-10
2. CGI-MP update on governance
3. WG updates by Mr. Peter Hoogervorst, Mr. Neil Clarke , Mr. François Lemaire, Mr. Glen Solimine, Ms. Selina Bolton
4. WG2 Change Requests and a new informative appendix C

## 5. AOB

### Agenda

#### 1. Previous meeting notes from 2015-03-10

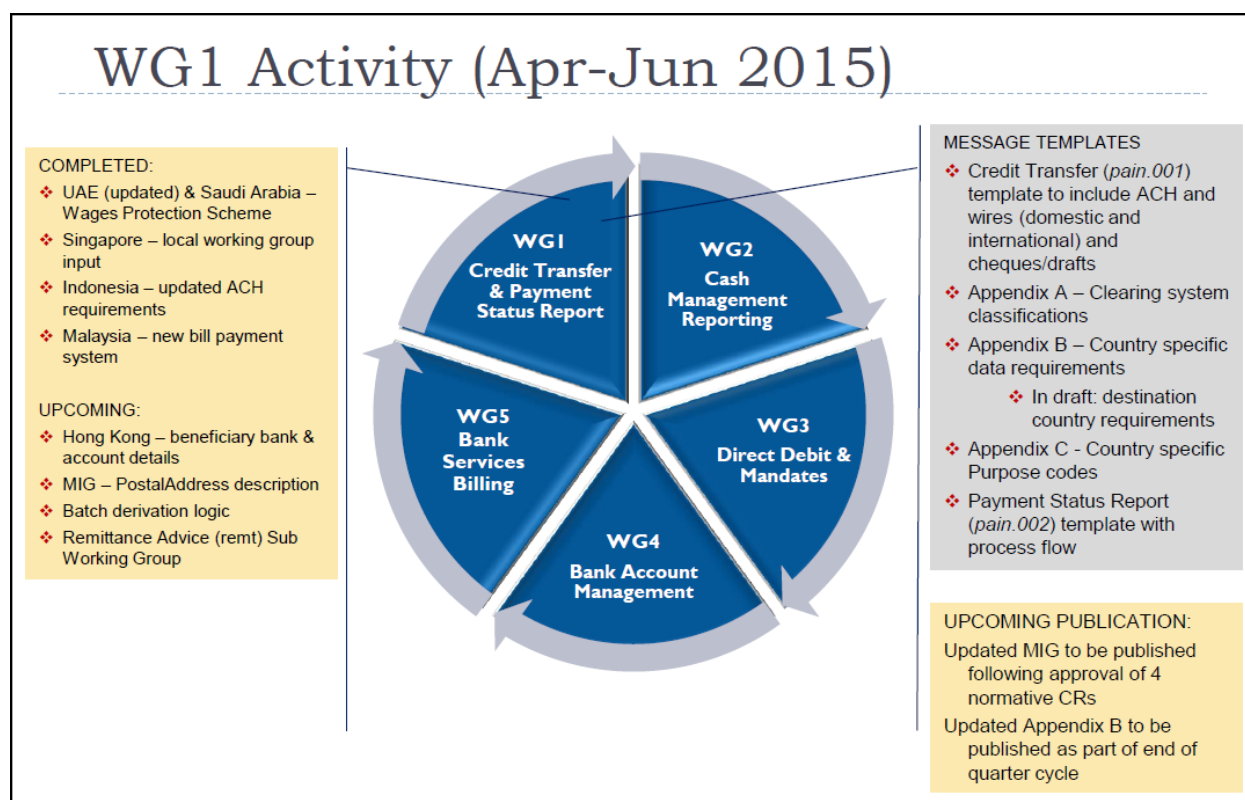
- Harri Rantanen opened the meeting and welcomed participants (28)
- [Notes from previous Plenary, 10 March 2015](#) were accepted without change.

#### 2. CGI-MP update on governance

- David Dobbing reported on the membership status. As of 23 June 2015, there are now 139 registered CGI members, 47 FIs and 92 Non-FIs.  
Six new members have joined since the previous Plenary; CA-Cib, AccessPay, Hoffmann-La Roche, Dion Global, Goldman Sachs, Schweizerische Bundesbahnen SBB.

#### 3. WG updates by Peter Hoogervorst, Neil Clarke, François Lemaire and Glen Solimine

- Peter Hoogervorst reported on **WG1**, Credit Transfer and Status Report:



- pain.001, Customer Credit Transfer Initiation
  - pain.002, Customer Payment Status Report
- Bi-weekly conference calls (normally Thu 3:00PM CET, 09:00AM EST, 1 Hr)  
The WG1 working group activities are reported in the above status update slide.

- Neil Clarke reported on **WG2**, Account Reporting:

## WG2 Activity (Apr-Jun 2015)

**CURRENT REVIEW:**

- ❖ SEPA DD Return reporting
  - ❖ Draft new CGI-MP guidance appendix now prepared\* on reporting SEPA DD return transactions with Country variation (DE/FR included)
  - ❖ Ready for formal vote
- ❖ ISO CR0313; SEPA CT/DD Type-R Reporting rules (creditor/debtor party reversal)
  - ❖ Update to Use Case guidance drafted\*\* - Ready for formal vote
  - ❖ Requires minor update to current camt.053 MIG\*\*\* – updated guidance drafted – Ready for formal vote
- ❖ Interbank Relay Reporting via SWIFT using camt.053
  - ❖ Draft schema prepared by SWIFT – feedback from CGI-MP members obtained and shared with SWIFT

**UPCOMING:**

- ❖ Cards Transaction reporting – aim to create a working group to consider development of guidance on enhanced card originated transaction reporting – using current V2 message set

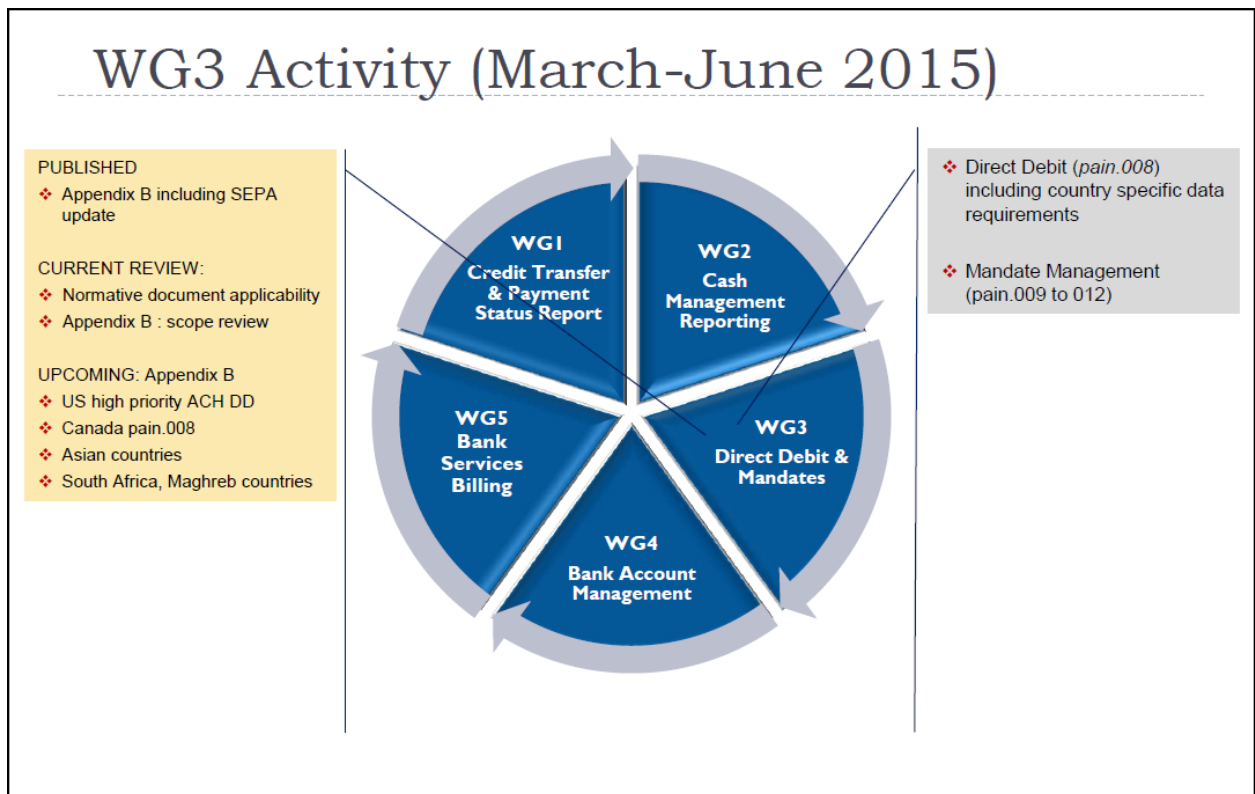
- ❖ Bank to Customer Statement (camt.053) - ISO20022 Common Global Implementation MIGs including errata **Minor Update pending\*\*\***
- ❖ Bank to Customer Account Report (camt.052) - ISO20022 Common Global Implementation MIGs including errata
- ❖ Bank to Customer Debit Credit Notification (camt.054) - ISO20022 Common Global Implementation MIGs including errata
- ❖ Appendix A – use cases and samples – **Updates pending\*\***
- ❖ Appendix B – Lockbox reporting for US
- ❖ **\*PROPOSED NEW Appendix C – SEPA DD Type-R Reporting**

- camt.052, Account Report
- camt.053, Statement
- camt.054, Debit/Credit Notification

Bi-weekly conference calls (normally Wed 3:00PM CET, 09:00AM EST, 1 Hr)

The WG2 working group activities are reported in the above status update slide.

- François Lemaire reported on **WG3**, Direct Debits and Direct Debit Mandates.

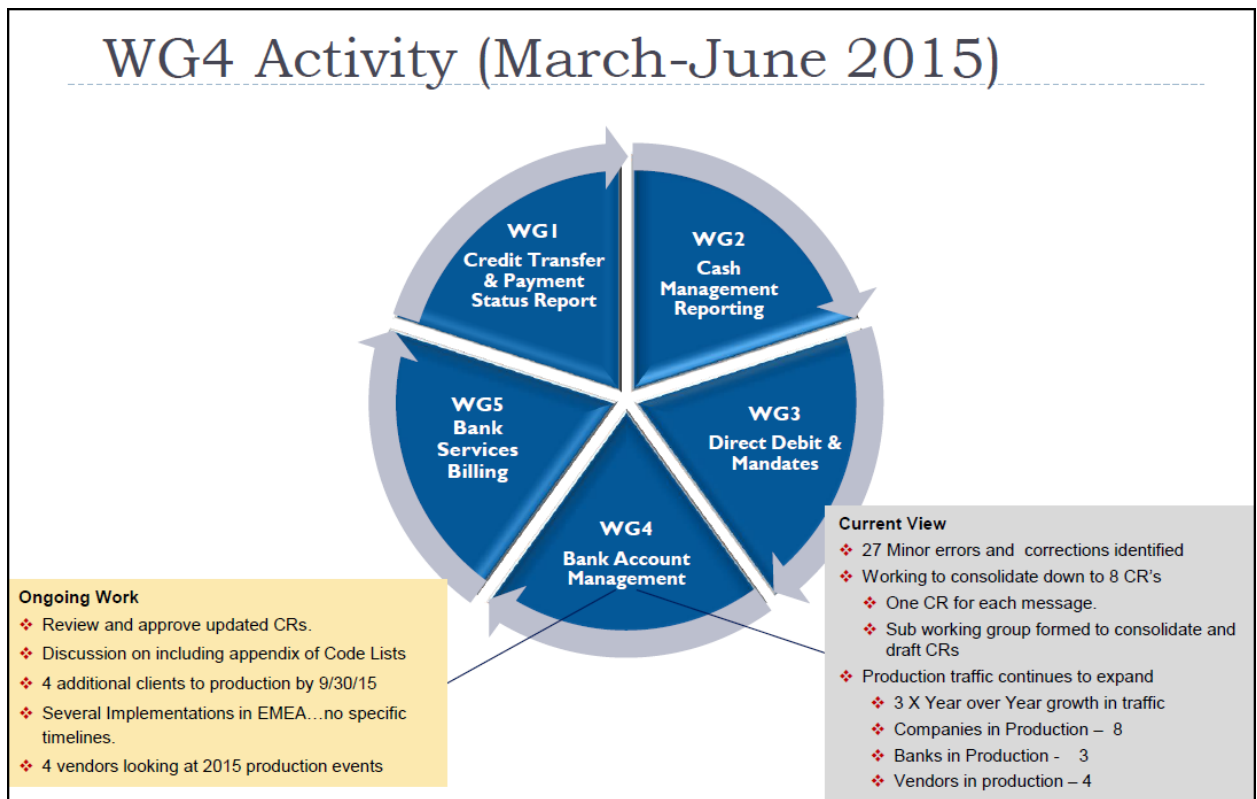


- pain.008, Customer Direct Debit
- pain.009, Mandate Initiation Request
- pain.010, Mandate Amendment Request
- pain.011, Mandate Cancellation Request
- pain.012, Mandate Acceptance Report

Bi-weekly conference calls (normally Mon 3:00PM CET, 09:00AM EST, 1 Hr)

The WG3 working group activities are reported in the above status update slide.

- Glen Solimine reported on **WG4**, eBAM (electronic Bank Account Management).



- 15 acmt (Account Management) messages

Bi-weekly conference calls, scheduled and advised by Facilitator.

The WG4 working group activities are reported in the above status update slide.

- Selina Bolton reported on **WG5**, BSB (Bank Services Billing).

## WG5 Activity (March-June 2015)

**ONGOING WORK**

- ❖ Schema Review: a number of use case limitations are being reviewed.
- ❖ Implementation Guidelines: identifying gaps and creating BSB implementation material to aid adoption of the standards.
- ❖ AFP Global Service Codes: identifying improvements to guidance materials and creating a feedback framework for raising additions.

**CURRENT VIEW**

- ❖ Given camt.086 market adoption is in its infancy the initial focus for WG5 is to assess limitations with the schema in general e.g. how it performs on pricing / tax representation.
- ❖ WG5 members are seeking opportunities to raise awareness of BSB e.g. industry forums, to encourage broader adoption of the standard.

- camt.086, Bank Services Billing Statement
- Bi-weekly conference calls (normally Mon 2:00PM CET, 08:00AM EST, 1 Hr)
- The W5 working group activities are reported in the above status update slide.

#### **4. WG2 Change Requests and a new informative Appendix C**

- Neil Clark reported that WG2 is planning to publish new WG2 Appendix, Appendix C, to cover SEPA Direct Debit Reporting guidelines. In conjunction with this informative publication there is a need to update the base normative documentation. As the items are interlinked a CGI-MP Plenary decision was sought and was approved, to start a common 45 days voting period (starting from 23<sup>rd</sup> June and ending 07<sup>th</sup> August, 2015).
- CGI-MP voting members are encouraged to cast their vote for each CR before the 07<sup>th</sup> August, 2015. The votes per CR can be sent to CGI-MP Support email address:  
[cgi.support@swift.com](mailto:cgi.support@swift.com)

##### 4.1 WG2 Normative CR\_Reversal Indicator usage\_June2015.pdf:

The request is to change the CGI-MP Rule regarding the usage of the ReversalIndicator (XML Tag = RvslInd)

##### 4.2 WG2 Informative\_SEPA DD Reporting\_New Appendix C\_June2015.pdf:

The request is to provide guidance on the reporting of SEPA Direct Debit Type-R messages.

##### 4.3 WG2 Informative\_CR\_Reversal Indicator\_Appendix A\_June2015.pdf:

The request is to change the CGI-MP Rule regarding the usage of the ReversalIndicator field (XML Tag = RvslInd)

#### **5. AOB**

Meeting closed at 16:11 CET and Mr. Harri Rantanen thanked all the participants and members of their attendance.

Next CGI-MP Plenary has been scheduled for Tuesday the 30<sup>th</sup> September, 2015 at 14:30 – 15:30 CET.