



Alliance Connect Bronze – SRX VPN boxes

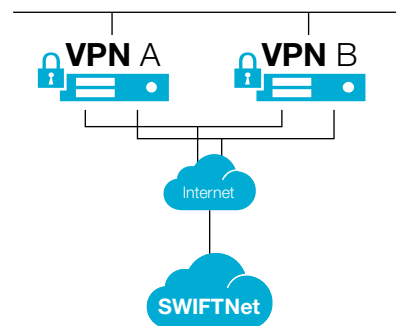
Network connectivity for low volume customers

Alliance Connect Bronze, when implemented with SRX345 VPN boxes, uses the Internet to access SWIFTNet using one or two active VPN boxes. By using the Internet, SWIFT reduces significantly the network cost to connect to SWIFTNet.

Who should choose Alliance Connect Bronze?

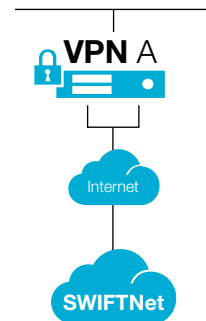
Alliance Connect Bronze is designed for low volume customers exchanging up to 1,000 messages per day and looking for a low cost yet fully secure network connectivity to SWIFTNet.

AC Bronze



Two active VPN boxes

AC Bronze



One active VPN box

Benefits

Reduced connectivity cost

Permanent connection

Global availability

Security

Ease of installation

Features

- When using two active VPN boxes:
 - > Cluster of 2 VPN boxes in an active/standby mode providing built-in resiliency
 - > Load sharing feature to optimise bandwidth usage
- Internet-based connectivity
- Proven Internet Protocol Security (IPSec)
- Single (with one active VPN) or dual (with two active VPNs) internet topology to increase resiliency
- Simple set-up and installation of the VPN boxes cluster

Benefits

Reduced connectivity cost

By making use of the Internet, SWIFT helps you reduce your network connectivity costs. Moreover, as Alliance Connect Bronze does not require a dedicated internet connectivity, you can make additional savings by reusing an existing internet connection.

Permanent connection

Connect Bronze can be available 24 hours a day, 7 days a week, giving you a permanent connection to counterparties, service providers, and peers.

Global availability

Internet connectivity is available everywhere, making this product accessible in all countries around the world.

Security

The built-in Internet Protocol Security (IPSec) encryption ensures complete confidentiality of data exchanged.

Ease of installation

SWIFT provides you with the necessary elements, such as the Quick Installation Guide – SRX VPN boxes for one or two active VPNs, to set up easily and quickly your secure connection to SWIFTNet.

Features

Internet-based connectivity

Alliance Connect Bronze enables customers to establish a secure channel to SWIFTNet, both for the primary (one active VPN) and back-up channels (two active VPNs). The internet connection can be provided by the internet Service Provider of your choice.

Load sharing feature when using two active VPN boxes, to optimise bandwidth usage

The load sharing option allows you to optimise the bandwidth usage of both lines connecting your infrastructure to SWIFTNet.

The active/standby is the default operating mode. In this mode, all the traffic goes over the primary connection. The back-up connection is only used in case of failure of the main one.

The load sharing option allows you to effectively split your traffic and optimise your bandwidth usage over both active connections according to your traffic requirements.

Enabling load sharing does not impact the failover mechanisms. In case of failure of one of the connections, the traffic will automatically be switched over to the remaining connections, regardless of any load sharing set-up.

Cluster of 2 VPN boxes in an active/standby mode providing built-in resiliency

Alliance Connect Bronze set-up has built-in resiliency in case of failure of one of the VPN boxes, due to the active/standby cluster of VPN boxes. If the primary VPN box fails, then the standby VPN box automatically initiates a failover. After restoration of the primary VPN box, the failed over traffic is automatically restored to the primary VPN.

Cluster of 1 VPN box providing a light solution

Alliance Connect Bronze set-up consists of one VPN box and one Internet connection. To provide resiliency a disaster recovery site is highly recommended. Alternatively, the mandatory spare VPN box should also be always available in case of VPN failure.

Proven IPSec security mechanism

Alliance Connect Bronze uses the proven security mechanism that the cluster of VPN boxes provides to create a secure channel over the Internet. This channel uses the IPSec technology, which preserves the security of the data that users exchange on a public infrastructure such as the Internet.

Simple set-up and installation of the VPN boxes cluster

The implementation and set up is straightforward: you will be able to install the VPN boxes and set up the secure connection yourself thanks to the Quick Installation Guide – SRX VPN boxes for one or two active VPNs provided with the VPN boxes.

What do you need?

All you need, depending on your configuration, are one or two broadband internet connections provided by your preferred internet Service Provider. You can even use an existing internet connection. SWIFT provides you with the VPN boxes.

Pricing and ordering

Alliance Connect Bronze pricing consists of a monthly port fee and a VPN box fee.

- The port fee is independent of the country or the speed/throughput of the internet connection. There is no additional fee for a second internet connection (resilient implementation with two active VPN boxes).
- You can order two active VPN boxes and you can always order an additional VPN box to dispose of a spare one on site or You can order one active VPN box which comes with a mandatory spare VPN.

Model	One-time fee	Monthly fee
Set or 2 VPN boxes + shipment	3,400 USD	56.67 USD
Set or 3 VPN boxes + shipment	5,000 USD	83.33 USD
Port fee (1-VPN or 2-VPN solution)		200 EUR

About

For more information, contact your SWIFT account managers or visit www.swift.com.

Ready to order?

Go to swift.com > Ordering > Order products and services or contact your SWIFT account manager.

VPN Installation assistance

The following groups can assist you getting connected to SWIFTNet:

SWIFT consulting team

Our expert SWIFT Consultants can help you with the installation of the VPN boxes.

To find out more about our SWIFT consulting team, swift.com > Our Solutions > Services > Consulting.

SWIFT certified partners

You may instead choose a SWIFT certified partner to help you with the VPN boxes installation.

To find out more about the SWIFT partner programme, the list of our Network Partners and certified partners, see swift.com > Solutions > Partner programme.

Additional information is available on swift.com, the Products community on swiftcommunity.net or through your SWIFT account manager.

For further details about the usage of Alliance Connect Gold, see swift.com > Support > Documentation.