



Watch Banking Insights

Cash and Payments

Business Intelligence solutions

June 2018

Watch Banking Insights

Key benefits



**Gain insights on
your performance
to grow/maintain
your activity
share**

**Dynamic and
user-friendly
dashboards**

**Peer comparison
and benchmark
against market
totals**



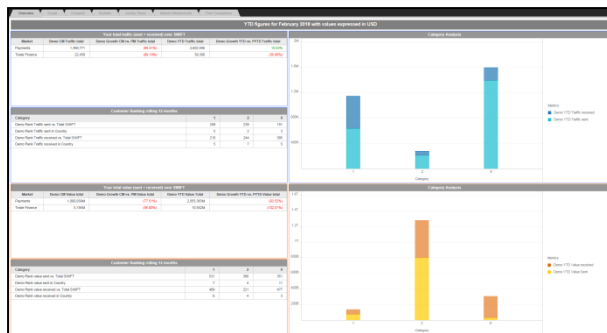
Watch Banking Insights

Cash and Payments dashboard

Track the evolution of your **Cash Management and Payments activity**.

Message Types covered:

- Category 1 – Customer Transfers and Cheques
- Category 2 – Financial Institutional Transfers
- Category 9 – Cash Management and Customer Status

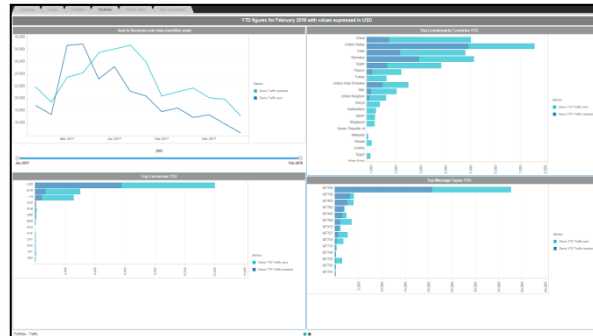


Trade Finance dashboard

Monitor your **Trade Finance footprint and portfolio**.

Message Types covered:

- Category 4 – Collections and Cash Letters
- Category 7 – Documentary Credits and Guarantees



Network Management dashboard

Manage your **Correspondent Network for Cash & Payments, and Trade Finance**.

Message Types covered:

- Category 1 – Customer Transfers and Cheques
- Category 2 – Financial Institutional Transfers
- Category 4 – Collections and Cash Letters
- Category 7 – Documentary Credits and Guarantees
- Category 9 – Cash Management and Customer Status



Cash and Payments Dashboard

The focus is on your messaging activity with your correspondents for **Payments and Cash Management** purposes.

Data can be analysed through various angles:

-  General overview and top activities (scope)
-  Regional and country focus (footprint)
-  Message types or currencies being used (portfolio)
-  Activity share
-  SWIFT Totals



Watch Banking Insights - Cash and Payments



Business
Intelligence
that gives
you the edge.

Cash and Payments Dashboard

Tabs available to deep dive on different views and analysis

Overview

Scope

Footprint

Portfolio

Activity
Share

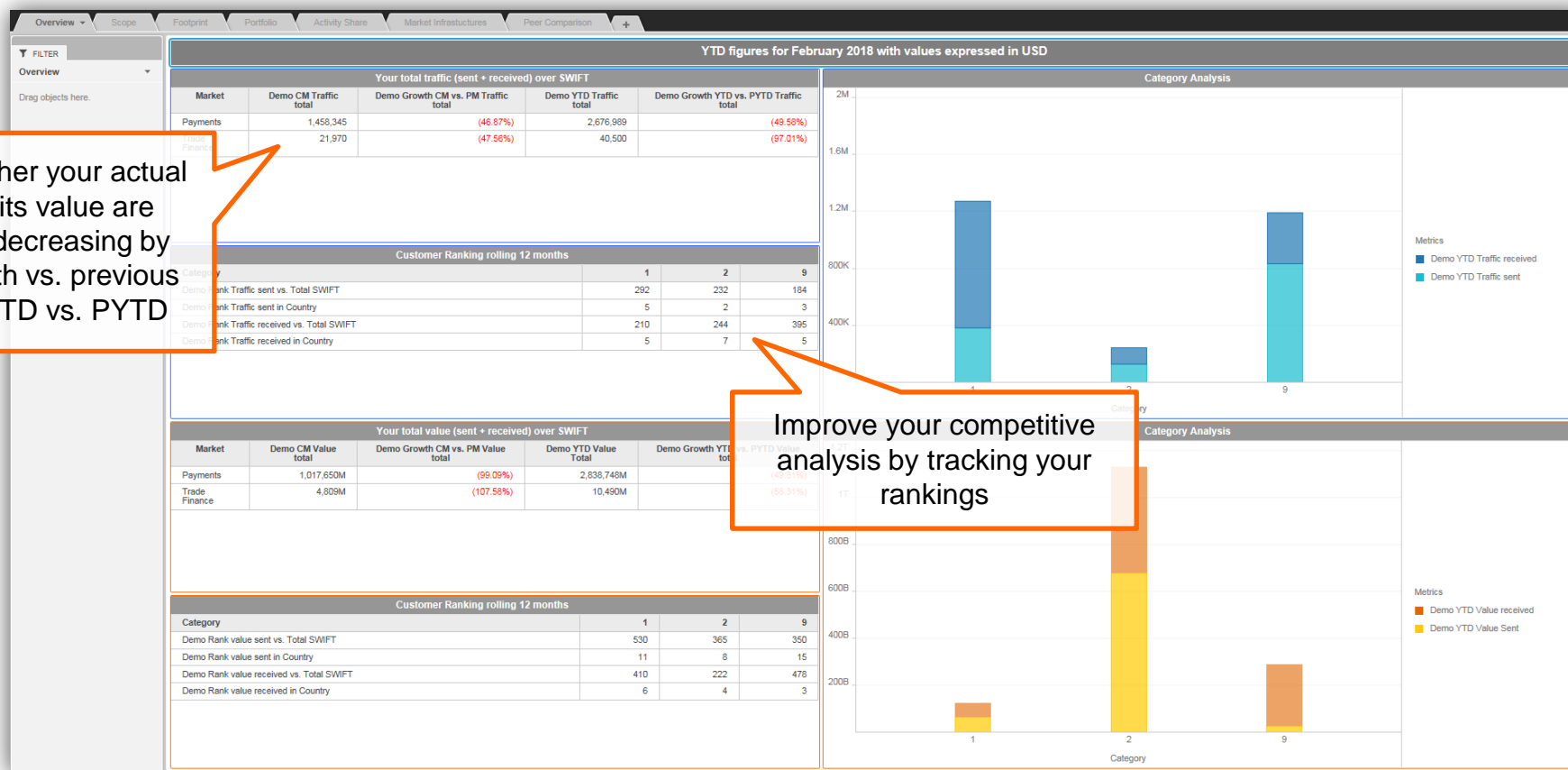
Market
Infrastructures

Peer
Comparison



Overview

Your Payments and Trade Finance SWIFT traffic growth by volume and value, and ranking over the last 12 months

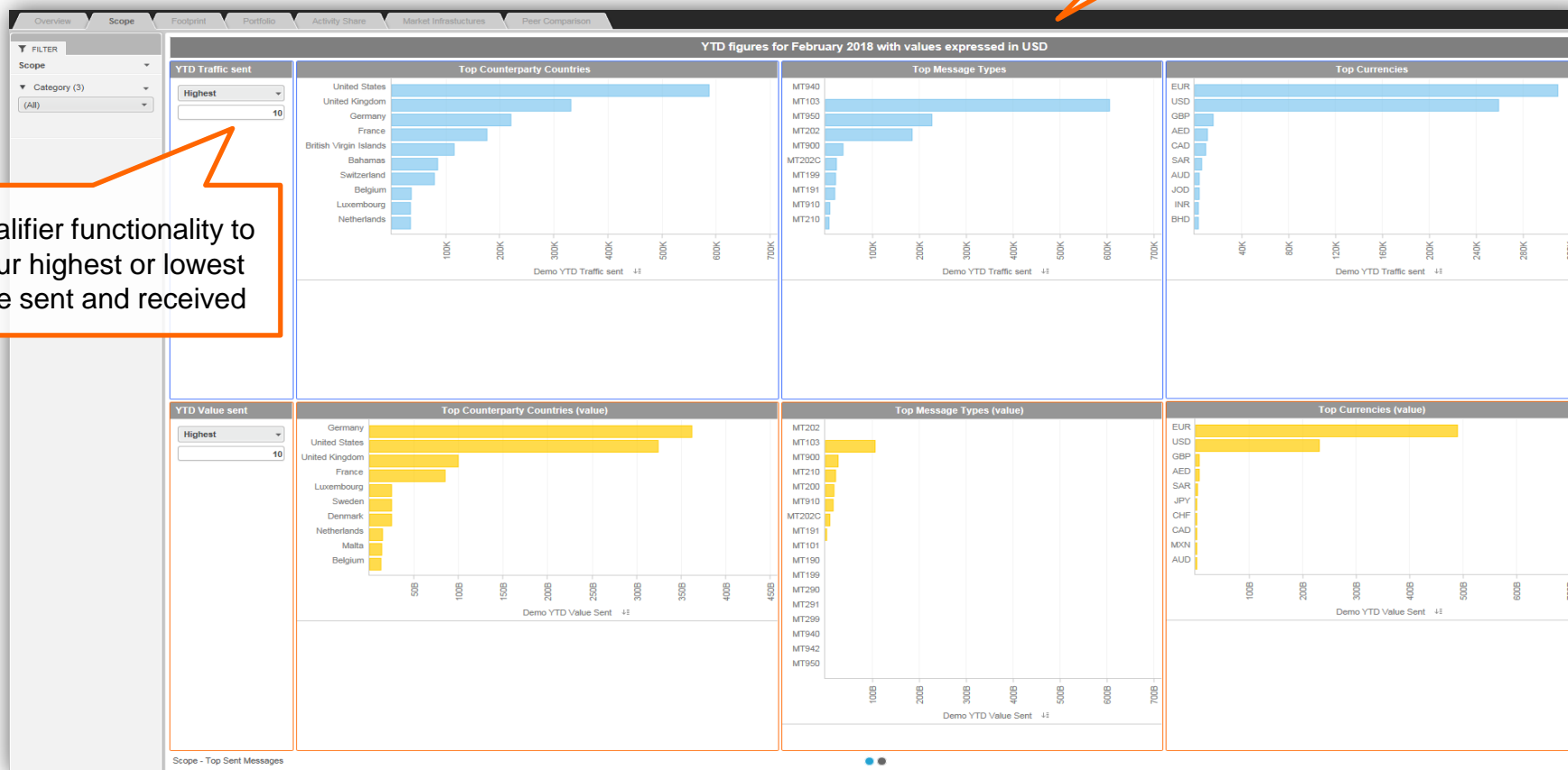


Scope

Quickly identify the concentration of your business

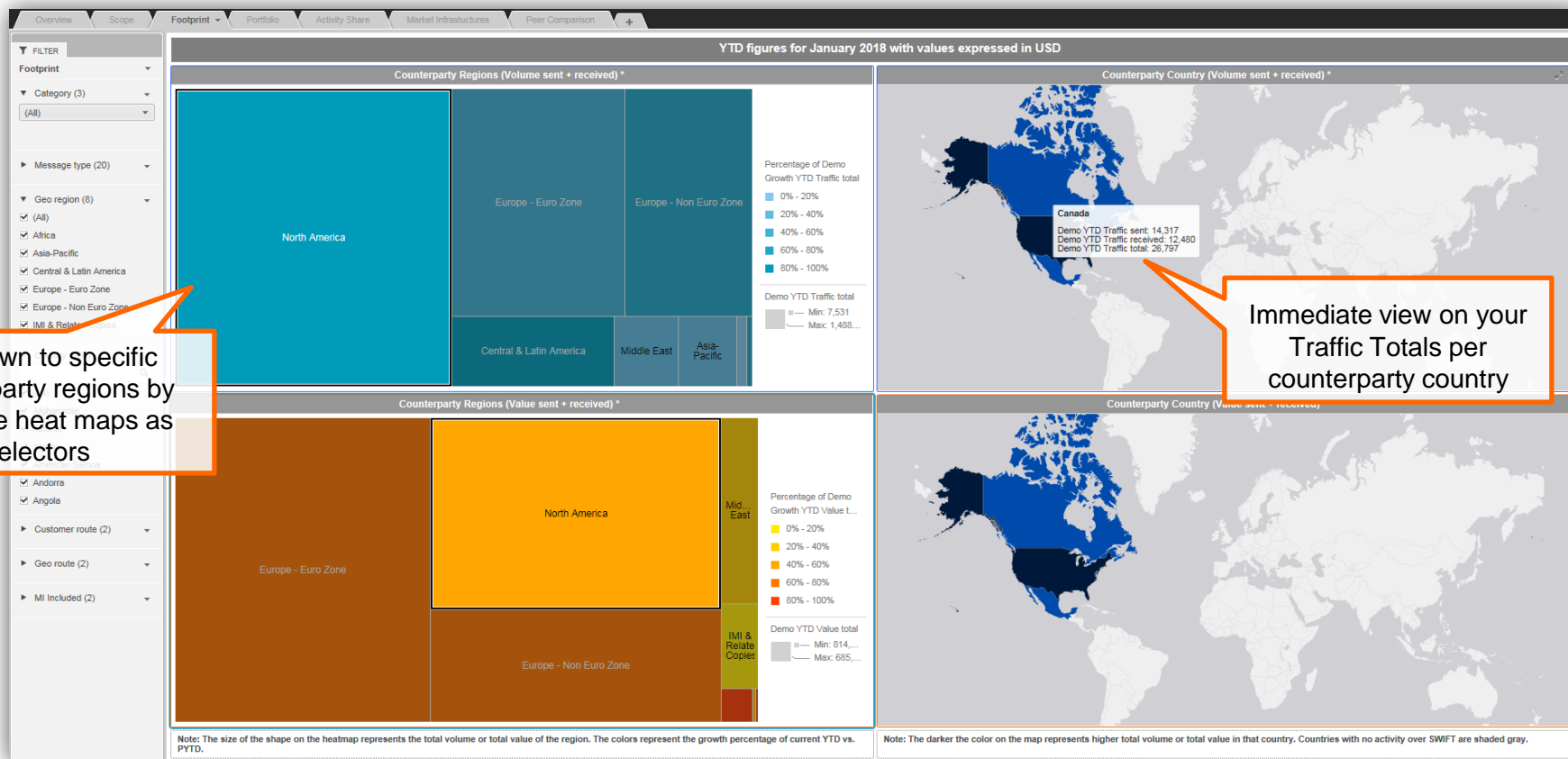
Identify which countries you send the most payments to and in what currencies these payments are instructed

Use the qualifier functionality to identify your highest or lowest traffic/value sent and received



Footprint

Get insights into how your payment messages are regionally concentrated



Drill down to specific counterparty regions by using the heat maps as selectors

Immediate view on your Traffic Totals per counterparty country



Footprint

Data from the heat map and world map combined into one grid to facilitate further analysis

Overview

Scope

Footprint

Portfolio

Activity Share

Market Infrastructures

Peer Comparison

+

FILTER

Footprint

Category (3)

(All)

Message type (20)

Geo region (8)

(All)

Africa

Asia-Pacific

Central & Latin America

Europe - Euro Zone

Europe - Non Euro Zone

IMI & Related Copies

Country (220)

(All)

Afghanistan

Albania

Algeria

American Samoa

Andorra

Angola

Customer route (2)

Geo route (2)

MI Included (2)

YTD figures for February 2018 with values expressed in USD

Regions (Volume)

Geo region	Counterparty Country	Demo YTD Traffic sent	Demo Growth Traffic Sent YTD vs. PYTD	Demo YTD Traffic received	Demo Growth Traffic received YTD vs. PYTD	Demo YTD Traffic sent + received	Demo Growth Traffic sent + received YTD vs. PYTD
Africa	Botswana	134	(57.48%)	5	0.00%	139	42.00%
	Djibouti	7	(40.00%)	7	300.00%	14	48.15%
	Algeria	564	32.75%	1,251	0.84%	1,814	48.15%
	Ethiopia	5	(33.33%)	0	0.00%	5	48.15%
	Ghana	2	0.00%	0	0.00%	2	48.15%
	Kenya	159	8.47%	3	(60.00%)	162	48.76%
	Morocco	179	33.33%	31	0.00%	210	50.95%
	Mozambique	204	32.26%	68	11.43%	272	50.92%
	Nigeria	5	0.00%	0	0.00%	5	48.45%
	Senegal	5	(60.00%)	0	0.00%	5	42.45%
Asia-Pacific	Tunisia	1,626	361.27%	1,066	53.52%	2,692	61.89%
	South Africa	437	29.41%	202	6.42%	639	50.37%
	Australia	3,699	(0.33%)	4,480	79.83%	8,179	52.33%
	Bangladesh	159	0.00%	0	(100.00%)	159	198.45%
	China	1,909	21.87%	251	111.76%	2,160	51.51%
	Hong Kong	10,568	48.95%	2,120	8.29%	12,687	52.20%
	Indonesia	2,311	20.91%	782	45.93%	3,093	51.25%
	India	48,069,518	25.92%	12,856,436	(2.93%)	60,925,954	(44.55%)

Export your data with ease, and conduct your own customised analysis

ExcelPDFData

Regions (Value)

Geo region	Counterparty Country	Demo YTD Value Sent	Demo Growth Value Sent YTD vs. PYTD	Demo YTD Value received	Demo Growth Value Received YTD vs. PYTD	Demo YTD Value sent + received	Demo Growth Value sent + received YTD vs. PYTD
Africa	Botswana	0	0.00%	5,695	(53.93%)	5,695	(116.07%)
	Djibouti	54,677	0.00%	0	(100.00%)	54,677	(36.11%)
	Algeria	313,297,899	31.55%	269,237,834	36.02%	582,535,732	(28.39%)
	Ethiopia	6,973	84.53%	0	0.00%	6,973	22.39%
	Ghana	9,790	0.00%	0	0.00%	9,790	(62.14%)
	Kenya	0	0.00%	344	(85.21%)	344	(147.35%)
	Morocco	820,755	(20.63%)	2,349,156	23.85%	3,169,911	(52.42%)
	Mozambique	84,331,338	631.67%	35,991,775	438.47%	120,323,113	491.42%
	Nigeria	12,346	260.21%	0	0.00%	12,346	198.07%
	Senegal	30,282	(28.52%)	0	0.00%	30,282	(90.66%)
Asia-Pacific	Tunisia	50,396,004	8546.29%	72,553,891	481.80%	122,949,896	729.33%
	South Africa	833,743	56.39%	3,908,815	(45.62%)	4,842,558	(101.00%)
	Australia	187,820,306	27.00%	97,243,042	62.48%	285,063,348	(23.74%)
	Bangladesh	0	0.00%	0	0.00%	0	(62.14%)
	China	879,333,766	6076.13%	690,662,842	13822.35%	1,569,996,608	8257.94%
	Hong Kong	1,553,370,257	39.44%	2,676,747,912	31.54%	4,230,118,169	(28.08%)
	Indonesia	184,059,352	149.06%	79,146,650	235.15%	263,206,002	110.36%
	India	48,069,518	25.92%	12,856,436	(2.93%)	60,925,954	(44.55%)

Change Visualization

Swap

Show Totals

Use as Filter...

Show Data

Remove Data

Data Source

Export

Duplicate

Copy to

Move to

Hide Titlebar

Maximize

Format

Rename

Delete

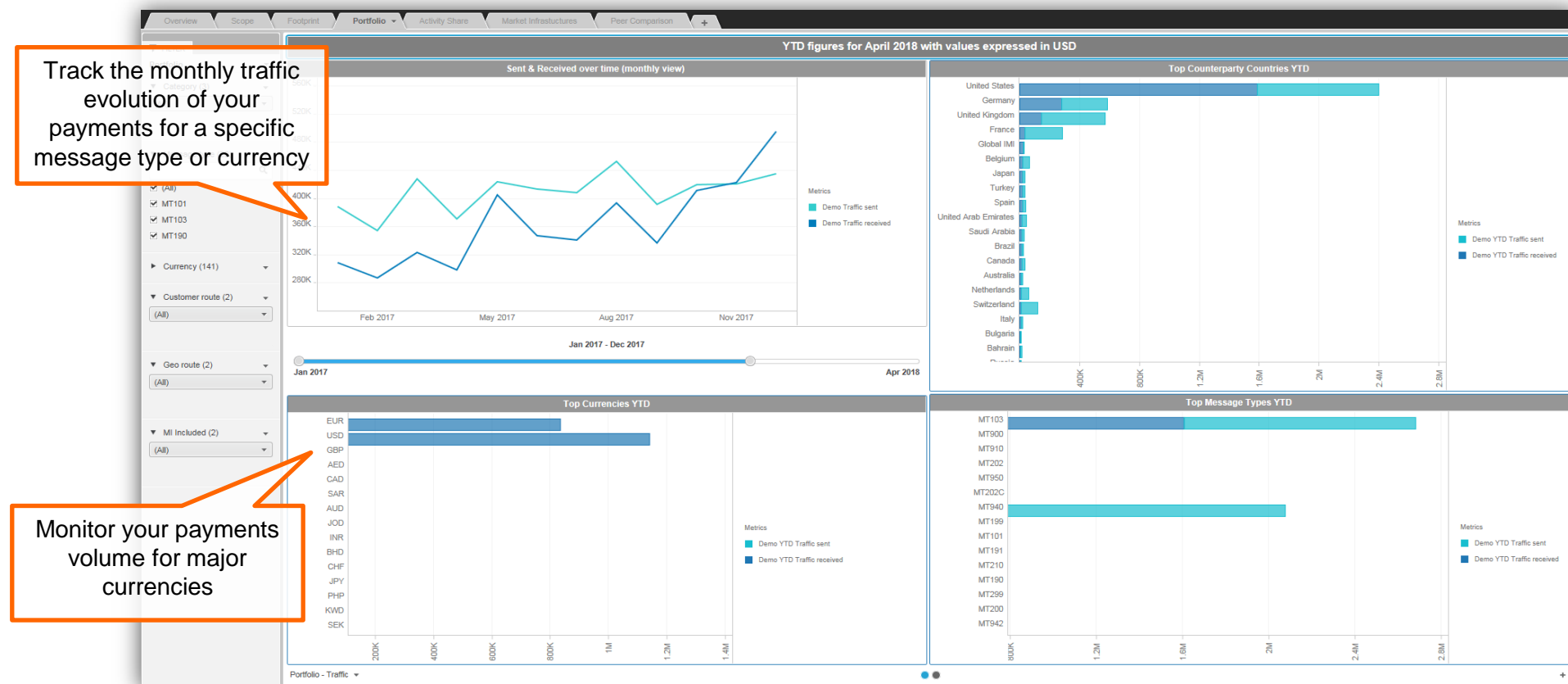
More Options...

New dashboard



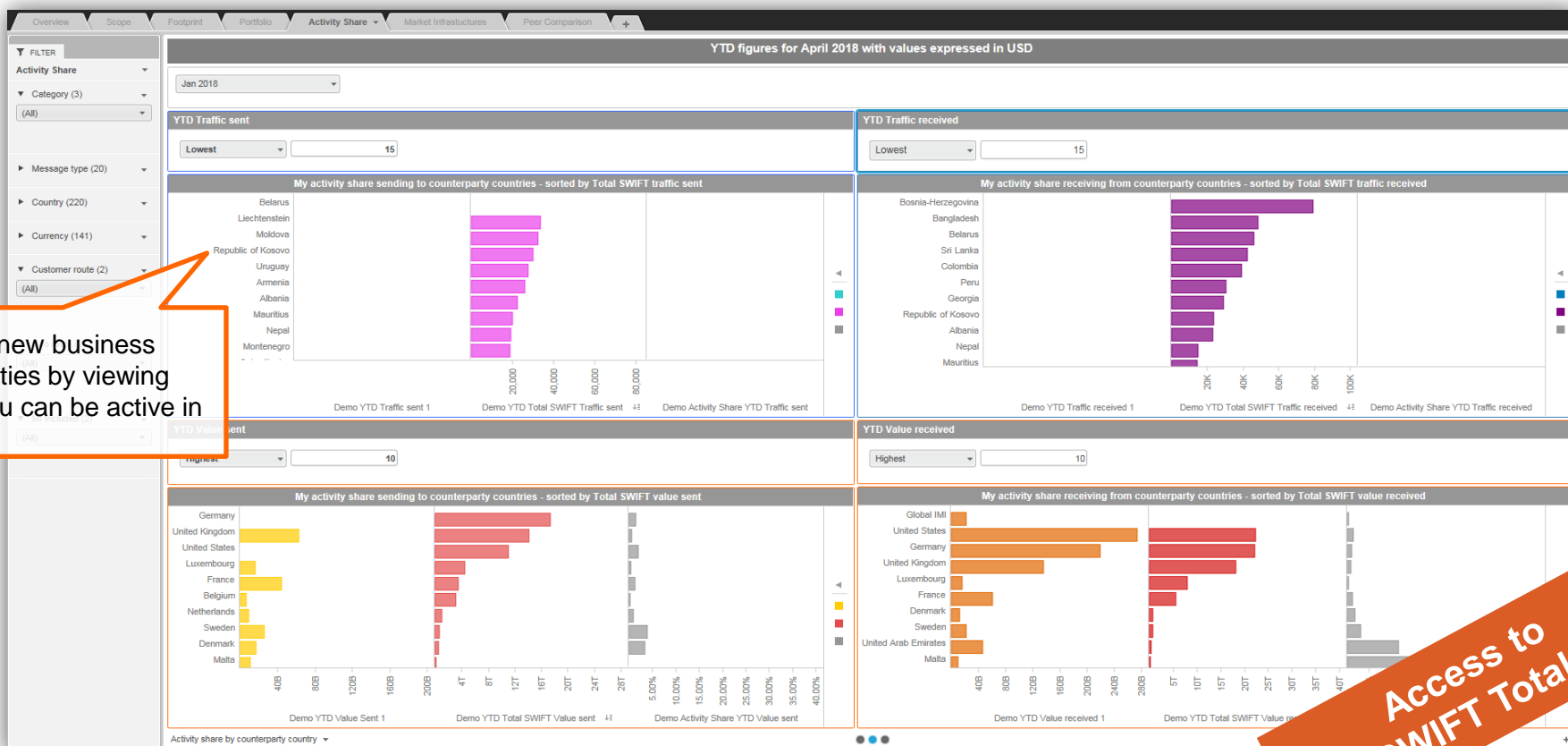
Portfolio

View your top counterparty countries or currencies for a specific message type



Activity Share

Compare your performance against SWIFT Totals by counterparty country

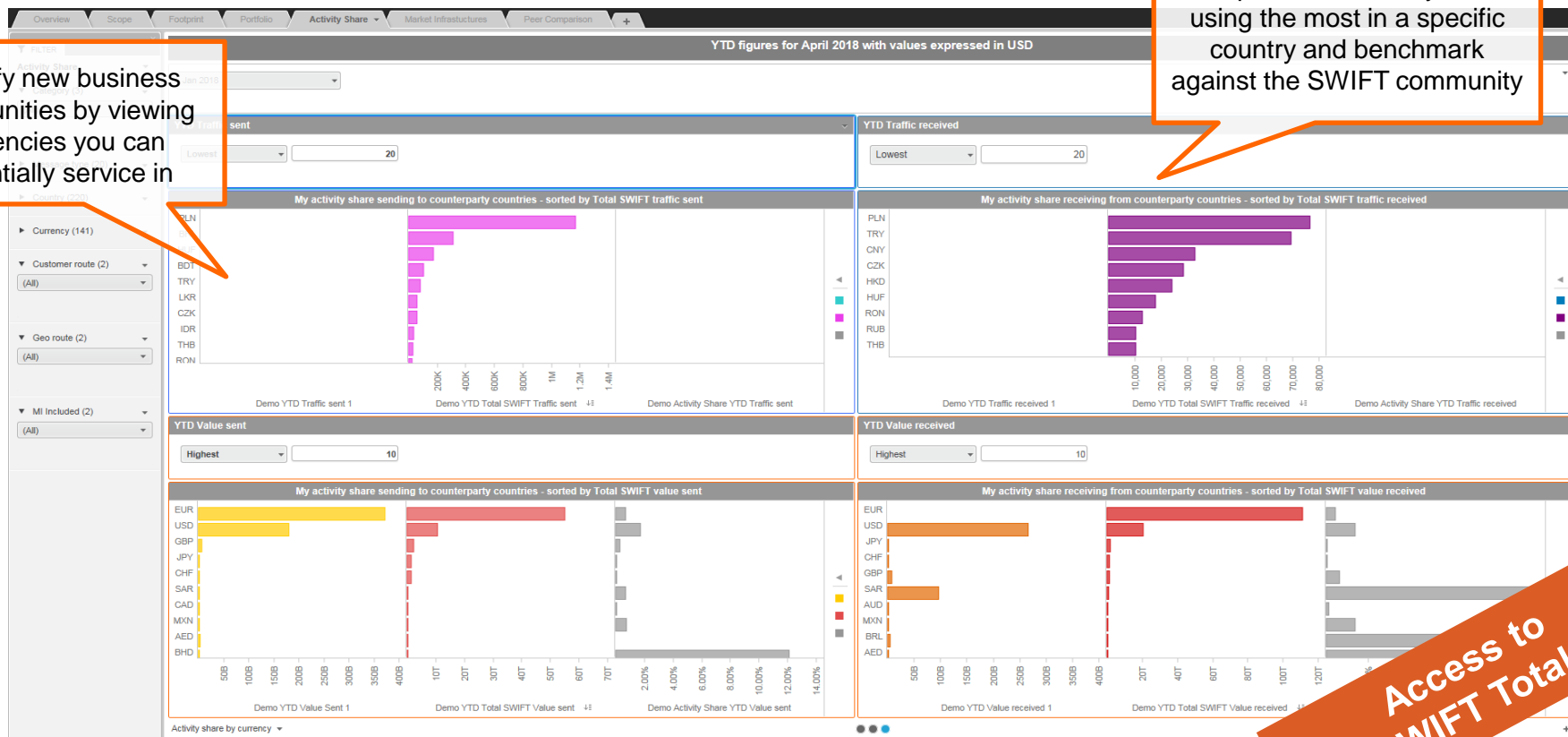


Activity Share

Compare your performance against SWIFT Totals by currency

Identify new business opportunities by viewing currencies you can potentially service in

Compare currencies you are using the most in a specific country and benchmark against the SWIFT community

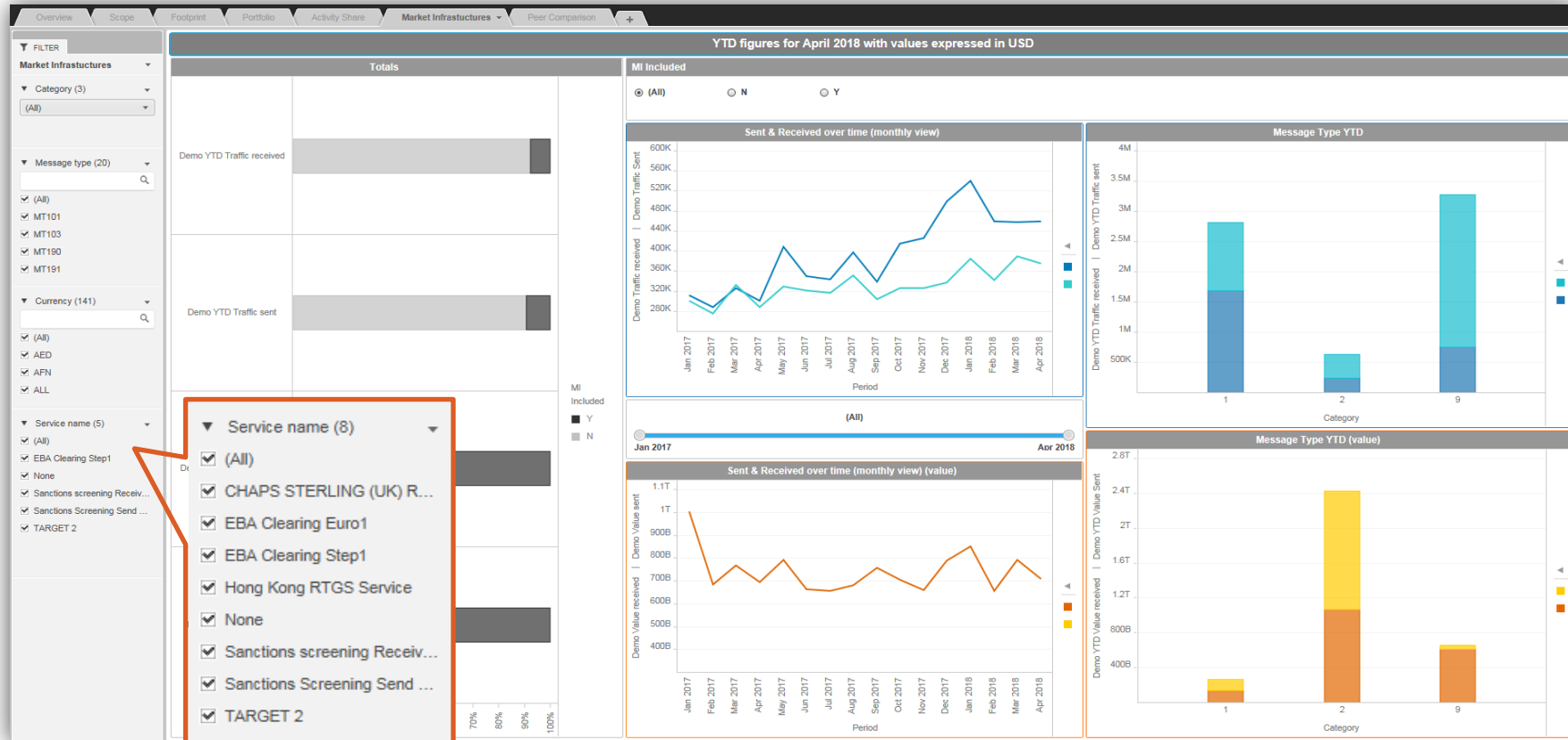


Access to SWIFT Totals



Market Infrastructures

Monitor your activity with Market Infrastructures

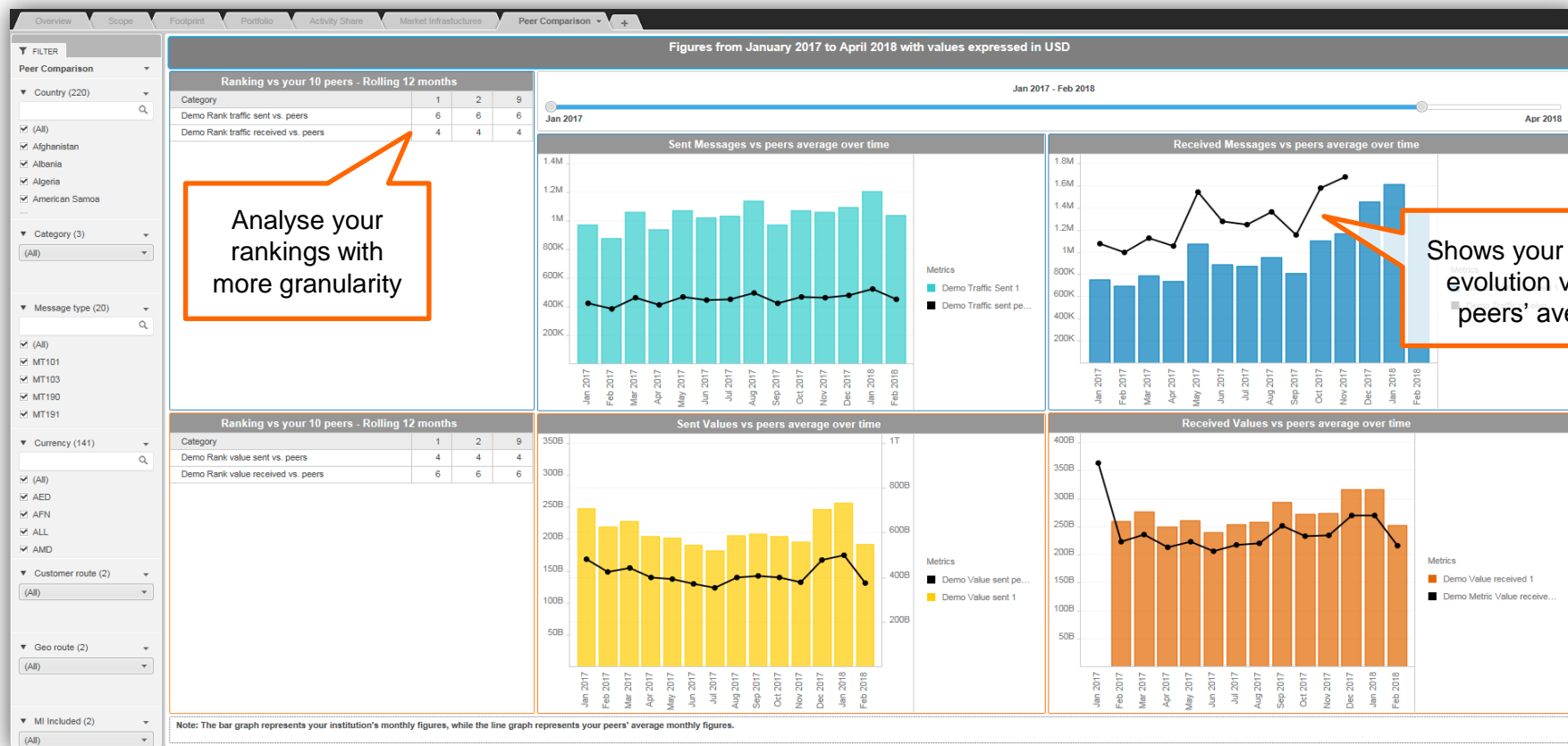


Watch Banking Insights - Cash and Payments



Peer Comparison

Compare your performance against your peers



Watch Banking Insights - Cash and Payments

*This is an additional subscription available for the Cash and Payments, and Trade Finance Dashboards



Find out more about Watch



Learn more on our e-training platform:

[SWIFT Smart](#)

Dedicated e-trainings on Watch Products available
Access to this module is only available for swift.com registered users.

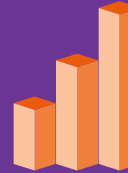


[SWIFT Business Intelligence](#)

[Watch documentation](#)



[Customer Support](#)



Documentation available on the
[Watch platform](#)



[Business Intelligence
Transaction Banking](#)



Send us your feedback
at watch@swift.com



www.swift.com