



*Network connectivity to SWIFT via two leased lines of the same capacity*

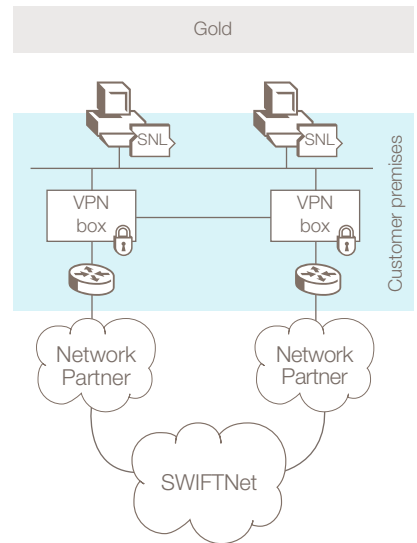
## Alliance Connect Gold

*Network connectivity for our high volume customers*

Alliance Connect Gold offers connectivity to SWIFTNet through two leased lines of the same capacity. The two lines are provided and managed by one or two of our Network Partners.

### Who should choose Alliance Connect Gold?

Alliance Connect Gold is designed for our high volume customers, exchanging more than 40,000 messages a day and requiring the highest resiliency combined with the best service level.



#### Benefits

- Dedicated service from Network Partner(s)
- Higher resiliency
- Highest service level
- Scalable

▲ Alliance Connect Gold key benefits

#### Features

- Two Network Partner managed connections with guaranteed service level
- Load sharing feature to optimise bandwidth usage
- Cluster of 2 VPN boxes in an active/standby mode providing built-in resiliency
- Proven Internet Protocol Security (IPSec) mechanism
- Simple set-up and installation

▲ Alliance Connect Gold key features

## Benefits

### Dedicated service from Network Partner(s)

In an effort to offer you maximum choice and flexibility, we have carefully selected a number of Network Partners for you to connect to SWIFTNet. SWIFT Network Partners use state-of-the-art security ensuring highest resilience and lowest risk.

### Higher resiliency

You may choose to use two different Network Partners to manage the two leased lines. This choice gives you the opportunity to avoid dependency on a single supplier for your network connectivity and further increases resiliency.

### Highest service level

The Network Partner(s) will provide, install and fully manage routers and dedicated access lines at your premises.

### Scalable

Alliance Connect Gold is scalable, and the bandwidth grows with your traffic needs. By a flexible upgrade mechanism, you can increase the size of your bandwidth.

## Features

### Two Network Partner managed connectivity with guaranteed service level

With the option to use two different Network Partners for the two connectivity lines, SWIFT offers a configuration with guaranteed bandwidths and high service levels in terms of resiliency and availability.

### Load sharing feature to optimise bandwidth usage

The load sharing option allows you to optimise the bandwidth usage of both leased lines connecting your infrastructure to SWIFTNet.

The active/standby is the default operating mode. In this mode, all the traffic goes over the primary connection. The back-up connection is only used in case of failure of the main one.

The load sharing option allows you to effectively split your traffic and optimise your bandwidth usage over both active lines according to your traffic requirements.

Enabling load-sharing does not impact the failover mechanisms. In case of failure of one of the lines, the traffic will automatically be switched over to the remaining line, regardless of any load sharing set-up.

### Cluster of 2 VPN boxes in an active/standby mode providing built-in resiliency

The Alliance Connect Gold set-up has built-in resiliency in case of failure of one of the VPN boxes, due to the active/standby cluster of VPN boxes. If the primary VPN box fails, then the standby VPN box automatically initiates a failover. After restoration of the primary VPN box, the other box automatically returns to its standby state.

### Proven IPSec security mechanism

Alliance Connect Gold uses the proven security mechanism that the cluster of VPN boxes provides to create a secure channel over the SWIFT Network Partner backbones, either for the prime or back-up connection. This channel uses Internet Protocol Security (IPSec) technology, which preserves the security of the data that users exchange on such an infrastructure.

### Simple set-up and installation of the VPN boxes cluster

The implementation and set up is straightforward: you will be able to install the VPN boxes and set up the secure connection yourself thanks to the Quick Installation Guide provided with the VPN boxes. Alternatively, you can ask one of our Network Partners, or a SWIFT certified partner to do it for you.

## What do you need?

One or two of our four Network Partners will supply and install the leased lines and the associated routers for which they will charge an additional fee. SWIFT provides you with the VPN boxes.

## Pricing and ordering

Alliance Connect Gold pricing consists of a monthly port fee and a VPN box fee.

- The port fee for the primary connection is based on the selected bandwidth. The port fee for the back-up connection is charged at 25 percent of the primary port fee.
- SWIFT supplies three VPN boxes, two that are actively connected as a cluster and one additional VPN box to dispose of a spare part directly on site.

Model	One time fee	Monthly fee
Set of 3 VPN boxes + shipment	2,425 USD	15 USD

For more information, see the Price List at [swift.com](http://swift.com) > Support > Documentation

### Ready to order?

Go to [swift.com](http://swift.com) > Ordering > Order products and services or contact your SWIFT account manager.

## Partners

Two types of partners can assist you getting connected to SWIFTNet:

### SWIFT Network Partners

SWIFT has four Network Partners to connect our customers to SWIFTNet. They will look after the installation of the leased lines and associated routers. Additionally, they may also help you to install the VPN boxes.

### SWIFT certified partners

You may instead choose a SWIFT certified partner to help you with the VPN boxes installation.

To find out more about the SWIFT partner programme, the list of our Network Partners and certified partners, see [swift.com](http://swift.com) > Solutions > Partner programme.

*Additional information is available on [swift.com](http://swift.com), the Products community on [swiftcommunity.net](http://swiftcommunity.net) or through your SWIFT account manager.*

*For further details about the usage of Alliance Connect Gold, see [swift.com](http://swift.com) > Support > Documentation.*